

Supplementary Information

Van Ginkel, Dottori, Alfieri, Feyen and Koks (2021): *Flood risk assessment of the European road network, NHESS*.

This supplement has the following contents:

1. Assumptions for the flood risk calculation	2
2. Comparison between the grid-based and object-based exposure datasets	3
3. Assumed infrastructure percentages per grid-cell in the grid-based approach	4
4. Use of OpenStreetMap road types in the object-based approach.....	5
5. Object-based implementation of the Huizinga damage curves	5
6. Road construction and road maintenance costs	6
7A. New damage curves: motorway curves (for OSM's motorways and trunk roads)	11
7B. New damage curves: other curves (for OSM's primary, secondary, tertiary and other roads)	12
8. Protocol for implementation of new damage curves	13
9. Additional model results	14
10. Validation event data.....	21
11. Data from reference study mentioned in the discussion	22
12. References	23
13. Large map of the results (also available as shapefile)	24

S9. Additional model results

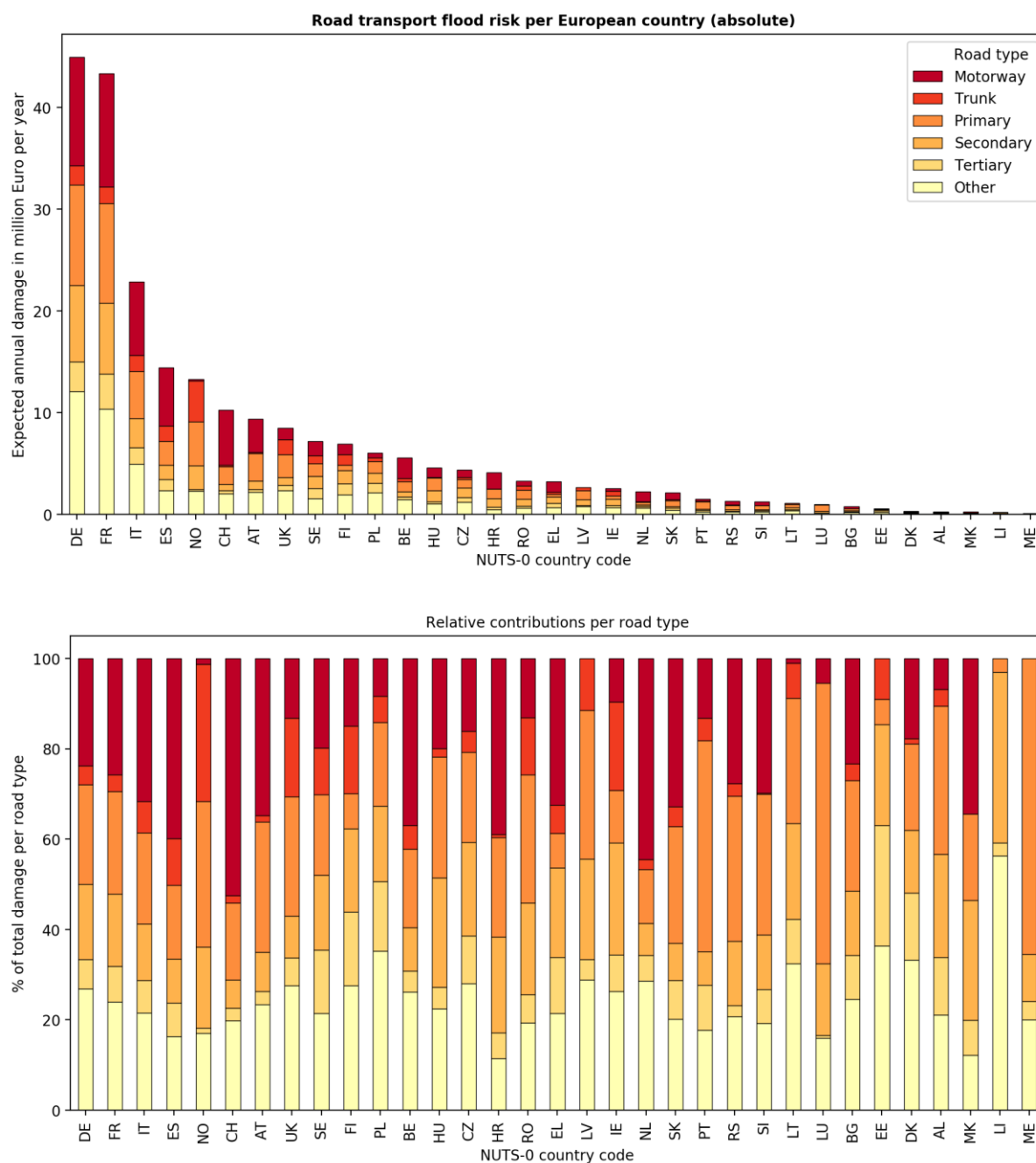


Figure S5 Flood risk per European country in the object-based approach with the new damage curves

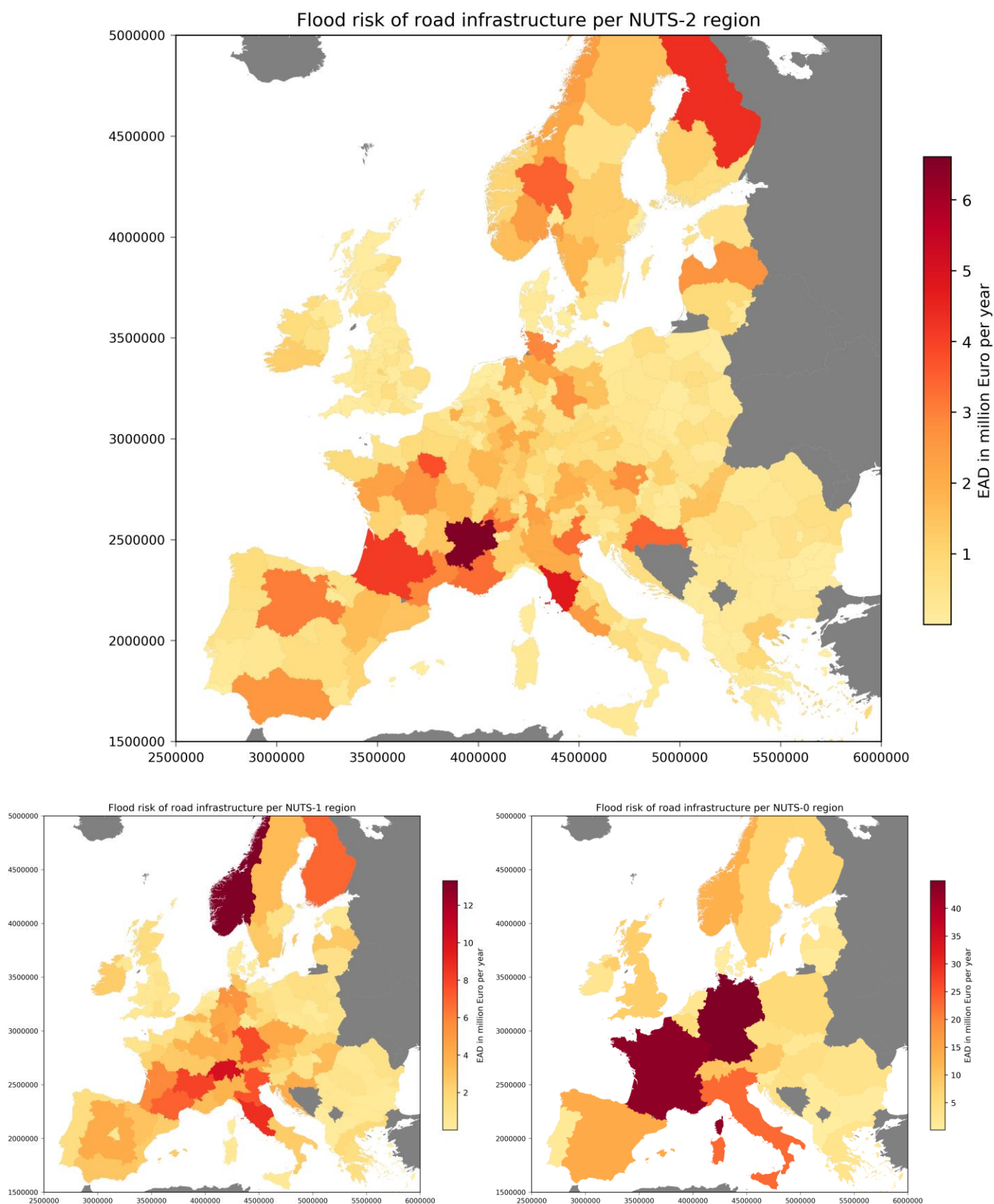


Figure S6 EAD to road infrastructure in the Europe at different levels of aggregation using the NUTS-classification
All maps are shown in the EPSG:3035 – ETRS89 / LAEA Europe coordinate reference system.

Table S16 Top-20 NUTS-2 regions with the largest expected annual damage

NUTS-2 code	NUTS-2 name	EAD (million €/y)
FRK2	Rhône-Alpes	6.61
ITI1	Toscana	4.73
FI1D	Pohjois- ja Itä-Suomi	4.35
FRI1	Aquitaine	4.14
FRJ2	Midi-Pyrénées	4.13
FR10	Ile-de-France	3.79
NO02	Hedmark og Oppland	3.47
HR04	Kontinentalna Hrvatska	3.38
FRL0	Provence-Alpes-Côte d’Azur	3.33
ITH3	Veneto	3.30
CH01	Région lémanique	3.21
ES41	Castilla y León	3.06
DEF0	Schleswig-Holstein	2.93
FRJ1	Languedoc-Roussillon	2.93
AT12	Niederösterreich	2.72
DEE0	Sachsen-Anhalt	2.68
FRB0	Centre - Val de Loire	2.65
LV00	Latvija	2.64
ES61	Andalucía	2.53
ITI4	Lazio	2.46

S13. Large map of the results (also available as shapefile)

Figure S8 (next page): Flood risk of motorways and trunk roads of the European road network
Road geometries © OpenStreetMap contributors 2019. Distributed under a Creative Commons BY-SA License.

